



Ansell

# FOCUS ON SAFETY

An integrated approach to improve your business performance

## WORKPLACE INJURIES ARE STILL A BIG PROBLEM

In 2015, there were approximately 2.9 million nonfatal workplace injuries and illnesses such as burns, lacerations, cuts and fractures as well as latex and chemical allergies reported by private industry employers in the US.<sup>1</sup> The previous year in the EU-28 zone, there were close to 3.2 million nonfatal accidents.<sup>2</sup>

Beside severe effects on the individual, all types of injuries can also represent particularly serious drawbacks for a company's business performance. The associated direct costs of an injury range from medical expenses to rehabilitation costs and workers' compensation, whereas indirect costs are caused by replacement workers, accident investigation, productivity loss and demotivation of workers.

An addition, global and local trends have an impact on your company's economic performance. These trends are:

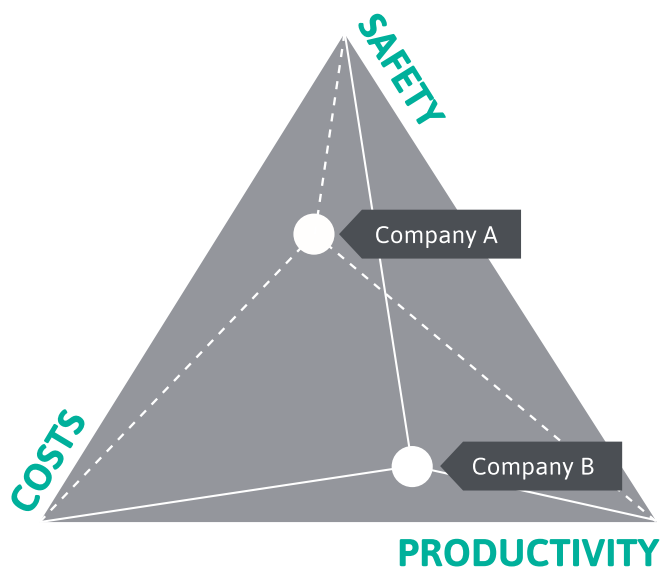
- Increased health and safety standards and regulations
- Increased focus on sustainability and waste reduction
- Vendor standardization and consolidation
- Global standardization in supplies and processes

The resulting demands for compliance, consolidation and simplification necessitate rapid changes and are forcing companies to find new ways to reduce PPE costs without sacrificing worker safety.

## AN INTEGRATED APPROACH TO IMPROVE YOUR BUSINESS PERFORMANCE

Ansell Guardian<sup>®</sup> is our proprietary service to help companies to select the right personal protective equipment solution to improve their safety, productivity and cost performance.

As an industry pioneer with the most advanced and proprietary technology and analytics, we have gained our experience in more than 12,000 assessments conducted since 2010, and we operate globally in more than 55 countries.



<sup>1</sup> Source: Bureau of Labor Statistics United States.  
<sup>2</sup> Source: Eurostat Statistics.

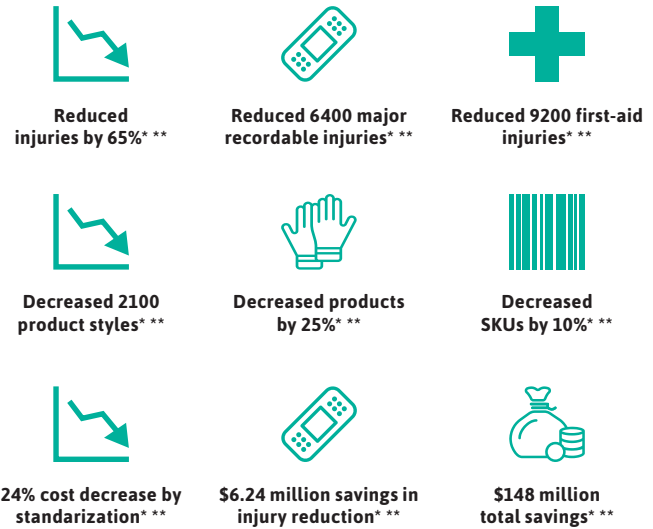
Ansell **GUARDIAN**<sup>®</sup>

## KEY METRICS

**Safety and compliance:** Ansell Guardian® helps our customers to improve worker safety and ensure compliance with safety regulations among the workforce.

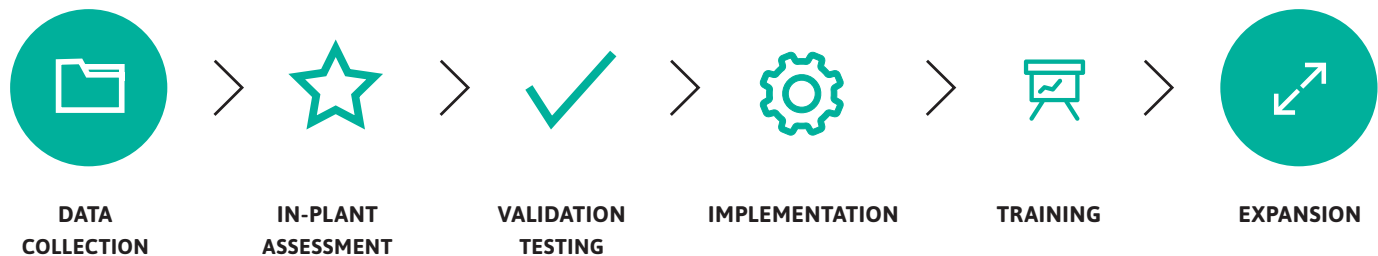
**Productivity:** Ansell Guardian® helps our customers to find the right PPE solution that allows for increased efficiency, better performance and improved productivity.

**Cost Performance:** Ansell Guardian® helps our customers to reduce injuries and follow-up costs, thus optimising your cost performance.



## WHAT'S THE PROCESS?

By focusing on the most relevant areas, Ansell Guardian® can deliver best practice recommendations with the most impact for our customers' businesses.



To schedule a call, register at [www.ansell.com/services](http://www.ansell.com/services) or contact our Ansell Guardian Specialist at [andrew.compton@ansell.com](mailto:andrew.compton@ansell.com)

\* Data based upon Ansell Guardian global surveys since 2014. Final results may vary.  
 \*\* Source: Ansell Guardian global surveys database since 2014.  
 Ansell, ® and ™ are trademarks owned by Ansell Limited or one of its affiliates. US Patented and US and non-US Patents Pending: [www.ansell.com/patentmarking](http://www.ansell.com/patentmarking) © 2018 Ansell Limited. All Rights Reserved.