



# WHEATON<sup>®</sup>

## SOCOREX<sup>®</sup> Acura<sup>®</sup> *electro* Pipettes

Your Electronic Choice

A World of Pipetting Expertise with SOCOREX<sup>®</sup>

[www.wheaton.com](http://www.wheaton.com)



Precision. Economical. Trusted. Easy To Use.

# WHEATON<sup>®</sup>

## SOCOREX<sup>®</sup> Acura<sup>®</sup> *electro* Pipettes

Your Electronic Choice

A World of Pipetting Expertise with SOCOREX<sup>®</sup>



### Your Electronic Choice

The Acura<sup>®</sup> *electro* pipettes are the latest upgrade of a successful line that makes electronic pipetting more versatile, simpler and safer than ever.

The Acura *electro* pipettes offer a unique cost-saving advantage. Once the pipette initial package is purchased, subsequent purchases consist of the appropriate volumetric module or pipette alone. The initial package contains the charging stand that holds up to three pipettes or battery packs.

The microprocessor controlled pipette features intuitive software, eliminating any complicated programming steps. There are six working modes that are easy to access and many volumes to select from. If you are looking for unsurpassed metrological performance and stability, choose the Acura *electro* pipettes.

#### Product Advantages:

- Optimal ergonomics, lightweight
- Easy, intuitive, self-teaching program
- Large display, reversible for right or left reading
- Swift-interchange battery pack
- Fast charge, long working autonomy
- Adjustable tip ejector\* fitting most tips
- Pipetting cycle counter
- 27 interchangeable volumetric modules - all fitting same control unit
- Two-year warranty

\*Socorex patented



# WHEATON®

## A World of Pipetting Expertise with SOCOREX®

### Product Advantages and Instrument Performance



#### Micropipettes

- Reduced shaft length and conical end improve driveability
- Easy access to microtubes and microplates
- Optional longer volumetric modules
- Simple conversion by user at any time
- Unsurpassed metrological performance and stability

#### Macropipettes

- Interchangeable nozzle protection filter
- Adapters for Pasteur pipette and straw tips
- Outstanding accuracy and precision

#### Multichannel

- Large selection of 8 and 12-channel models
- Lightweight and perfect hand fitting
- Sequential tip ejection
- Also fits any single channel volumetric module

#### Ordering Information

Initial package includes pipette, charging stand and accessories. Additional pipettes (alone) supplied with individual QC certificate, pipette tips samples and operating instructions.

Cat. No. Initial Package	Cat. No. Pipette Alone	Volume	Division	Inaccuracy (E%)			Imprecision (CV%)			Tip Style
				Min. vol.	Mid. Vol.	Max. Vol.	Min. Vol.	Mid. Vol.	Max. Vol.	
<b>Micropipettes Acura® electro 926XS</b>										
03-410-001	03-410-101	0.1 - 2µL	0.01µL	<± 2.5 % <sup>1)</sup>	<± 1.2 %	<± 0.9 %	< 2.5 % <sup>1)</sup>	< 1.5 %	< 0.8 %	Ultra 10µL
03-410-002	03-410-102	0.5 - 10µL	0.05µL	<± 1.2 % <sup>2)</sup>	<± 0.8 %	<± 0.6 %	< 1.5 % <sup>2)</sup>	< 0.7 %	< 0.35 %	Ultra 10µL
03-410-003	03-410-103	0.5 - 10µL	0.05µL	<± 1.2 % <sup>2)</sup>	<± 0.8 %	<± 0.6 %	< 1.7 % <sup>2)</sup>	< 0.8 %	< 0.4 %	200µL
03-410-004	03-410-104	1 - 20µL	0.1µL	<± 1.2 % <sup>2)</sup>	<± 0.6 %	<± 0.5 %	< 1.2 % <sup>2)</sup>	< 0.4 %	< 0.3 %	200µL
03-410-005	03-410-105	2.5 - 50µL	0.25µL	<± 1.0 % <sup>2)</sup>	<± 0.6 %	<± 0.5 %	< 0.7 % <sup>2)</sup>	< 0.3 %	< 0.25 %	200µL
03-410-006	03-410-106	5 - 100µL	0.5µL	<± 1.0 % <sup>2)</sup>	<± 0.6 %	<± 0.5 %	< 0.7 % <sup>2)</sup>	< 0.3 %	< 0.2 %	200µL
03-410-007	03-410-107	10 - 200µL	1.0µL	<± 1.0 % <sup>2)</sup>	<± 0.6 %	<± 0.4 %	< 0.6 % <sup>2)</sup>	< 0.2 %	< 0.15 %	200µL
03-410-008	03-410-108	50 - 1000µL	5.0µL	<± 0.8 % <sup>2)</sup>	<± 0.5 %	<± 0.4 %	< 0.4 % <sup>2)</sup>	< 0.15 %	< 0.1 %	1000µL
<b>Macropipettes Acura® electro 936</b>										
03-410-009	03-410-109	0.1 - 2mL	0.01mL	<± 1.5 % <sup>2)</sup>	<± 1.0 %	<± 0.5 %	< 0.6 % <sup>2)</sup>	< 0.3 %	< 0.15 %	2mL
03-410-010	03-410-110	0.25 - 5mL	0.05mL	<± 1.2 % <sup>2)</sup>	<± 0.8 %	<± 0.5 %	< 0.6 % <sup>2)</sup>	< 0.3 %	< 0.15 %	5mL
03-410-011	03-410-111	0.5 - 10mL	0.05mL	<± 1.0 % <sup>2)</sup>	<± 0.7 %	<± 0.5 %	< 0.5 % <sup>2)</sup>	< 0.2 %	< 0.15 %	10mL
<b>8-Channel Pipettes Acura® electro 956</b>										
03-410-012	03-410-112	0.5 - 10µL	0.05µL	<± 3.5 % <sup>2)</sup>	<± 1.5 %	<± 1.0 %	< 3.0 % <sup>2)</sup>	< 0.9 %	< 0.7 %	Ultra 10µL
03-410-013	03-410-113	2.5 - 50µL	0.25µL	<± 1.0 % <sup>2)</sup>	<± 0.9 %	<± 0.8 %	< 1.0 % <sup>2)</sup>	< 0.6 %	< 0.4 %	200µL
03-410-014	03-410-114	10 - 200µL	1.0µL	<± 0.9 % <sup>2)</sup>	<± 0.7 %	<± 0.6 %	< 0.6 % <sup>2)</sup>	< 0.4 %	< 0.25 %	200µL
03-410-015	03-410-115	20 - 350µL	5.0µL	<± 1.0 % <sup>2)</sup>	<± 0.8 %	<± 0.6 %	< 0.6 % <sup>2)</sup>	< 0.4 %	< 0.25 %	350µL
<b>12-Channel Pipettes Acura® electro 956</b>										
03-410-016	03-410-116	0.5 - 10µL	0.05µL	<± 3.5 % <sup>2)</sup>	<± 1.5 %	<± 1.0 %	< 3.0 % <sup>2)</sup>	< 0.9 %	< 0.7 %	Ultra 10µL
03-410-017	03-410-117	2.5 - 50µL	0.25µL	<± 1.0 % <sup>2)</sup>	<± 0.9 %	<± 0.8 %	< 1.0 % <sup>2)</sup>	< 0.6 %	< 0.4 %	200µL
03-410-018	03-410-118	10 - 200µL	1.0µL	<± 0.9 % <sup>2)</sup>	<± 0.7 %	<± 0.6 %	< 0.6 % <sup>2)</sup>	< 0.4 %	< 0.25 %	200µL
03-410-019	03-410-119	20 - 350µL	5.0µL	<± 1.0 % <sup>2)</sup>	<± 0.8 %	<± 0.6 %	< 0.6 % <sup>2)</sup>	< 0.4 %	< 0.25 %	350µL

Performance values obtained in Forward mode with double-distilled water at constant temperature (± 0.5°C) comprised between 20 and 25°C in accordance with ISO 8655.

Performance measured at: <sup>1)</sup> 0.5 µL, <sup>2)</sup> 10% of nominal volume

# Acura® electro Pipettes

# WHEATON<sup>®</sup>

## SOCOREX<sup>®</sup> Acura<sup>®</sup> *electro* Electronic Pipette

Great Built-in Flexibility

Scroll through mode selection by pressing a single button.



### Forward Mode

Aspiration and pipetting of set volume. Suitable for all applications.

### Reverse Mode

Aspiration in excess, followed by dosing of set volume. Enhances reproducibility below 20µL. Especially recommended for viscous and foaming liquids.

### Stepper Mode

Tip filling and step-by-step distribution. Best suited to aliquot samples.

### Dilution Mode

Aspiration of 2 or 3 different volumes for restitution in one shot. An easy way to dilute samples.

### Tactile Mode

"Start and stop" liquid measurement, titration and gel loading by simple touch of activation button.

### Mixing

"Up and down" liquid flow in the tip / vial.



1



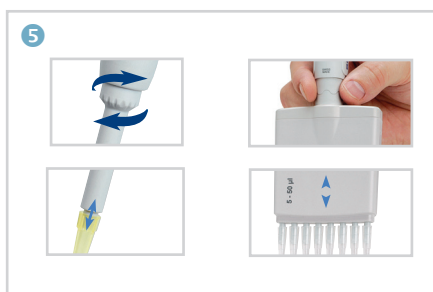
2



3



4



5

### Natural Ergonomics ①

The Acura<sup>®</sup> *electro* offers shape, balance and working ergonomics resembling those of a manual instrument. But comfort is greatly improved, thus pipetting and result consistency are outstanding.

### Unique "Right or Left" Display Reading ②

Display converts instantly to right or left side reading. All information is clearly presented and visible at a glance during programming, pipetting and calibration steps.

### Variable Working Speed ③

Located on the front side, speed selector allows swift change even during the pipetting process. In addition, slow speed access at any time by gentle touch of start button.

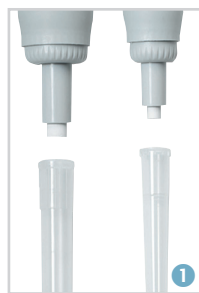
### Pipetting Cycle Counter ④

A simple double click gives access to the number of pipetting cycles performed since last zeroing.

### Tip Ejection - Easier Than Ever ⑤

Maximal efficiency obtained with a large surface, ergonomically located ejector button. The shaft height adjustment system called Justip™ (4mm span) - controlled by efficient click-stops - allows a wide selection of tips to tightly fit the nozzle.

The multichannel bowed shape ejector head permits effortless, sequential tip ejection.



1



2



3



4



5

### Nozzle Protection Filter ①

Macro models accommodate a filter protecting instrument against liquid overflow and contamination. Located in the nozzle, it can be removed and changed easily.

### Pasteur Pipette - Straw Tip Adapters ②

Optional accessories fit 2mL glass Pasteur pipettes or 5mL straw tip instead of Polypropylene tips.

### Optimal Working Position ③

360° rotation of multichannel volumetric modules allows selection of the best working position.

### Time Efficient Maintenance ④

Pipette construction limits maintenance to a minimum - no tool required to remove volumetric module. The pipetting cycle counter facilitates maintenance monitoring. Whenever sterilization is needed, volumetric modules can be autoclaved at 121°C/250°F.

### Initial Package ⑤

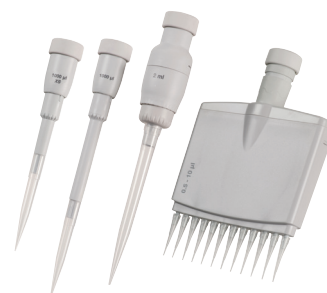
Recommended when purchasing an Acura<sup>®</sup> *electro* for the first time, each initial package contains one electronic pipette, QC certificate and operating instructions, charging stand, power supply, additional battery pack, pipette tips samples. Thereafter, additional pipettes can be purchased alone and charged on existing stand.

# WHEATON®

## SOCOREX® Acura® *electro* Electronic Pipette Interchangeable Volumetric Modules



One control unit fits a choice of 27 volumetric assemblies available sep-arately. This greatly extends working possibilities and makes electronic pipetting affordable to all budgets. Disassembling and re-assembling without any tool contributes towards maximal flexibility. Calibration specificities of extra modules, as set by factory QC or by pipette owner, are retained in instrument memory.



### Volumetric Modules

Cat. No.	Volume Range	Tip Style
<b>Single Channel Microvolumes Reduced Shaft Length</b>		
03-410-171	0.1 - 2µL	Ultra 10µL
03-410-172	0.5 - 10µL	Ultra 10µL
03-410-173	0.5 - 10µL	200µL
03-410-174	1 - 20µL	200µL
03-410-175	2.5 - 50µL	200µL
03-410-176	5 - 100µL	200µL
03-410-177	10 - 200µL	200µL
03-410-178	50 - 1000µL	1000µL
<b>Regular Shaft Length</b>		
03-410-179	0.1 - 2µL	Ultra 10µL
03-410-180	0.5 - 10µL	Ultra 10µL
03-410-181	0.5 - 10µL	200µL
03-410-182	1 - 20µL	200µL
03-410-183	2.5 - 50µL	200µL
03-410-184	5 - 100µL	200µL
03-410-185	10 - 200µL	200µL
03-410-186	50 - 1000µL	1000µL
<b>Single Channel Macrovolumes</b>		
03-410-187	0.1 - 2mL	2mL
03-410-188	0.25 - 5mL	5mL
03-410-189	0.5 - 10mL	10mL
<b>8-Channel Microvolumes</b>		
03-410-190	0.5 - 10µL	Ultra 10µL
03-410-191	2.5 - 50µL	200µL
03-410-192	10 - 200µL	200µL
03-410-193	20 - 350µL	350µL
<b>12-Channel Microvolumes</b>		
03-410-194	0.5 - 10µL	Ultra 10µL
03-410-195	2.5 - 50µL	200µL
03-410-196	10 - 200µL	200µL
03-410-197	20 - 350µL	350µL

### Calibration 1

Control software gives immediate access to calibration menu. Performance check possible over two or three independent volumes (Vmin, Vmid and Vmax). New settings entered directly from the keyboard. Error message warns of any inaccurate plunger movement.

### Compact Charging Rack 2

Space saving stand holds up to three battery packs simultaneously. The ideal charging and storage accessory for spare batteries, available at any time.

### Pipette Charging Stand 3

Stand allows charging and storing up to three electronic pipettes or battery packs simultaneously. Each position is fitted with a red / green charging LED. One stand supplied with every initial package.

### Long Working Autonomy 4

NiMH battery pack exchangeable instantly. Fast battery charging (<1.5 hours) and extended working autonomy (>3000 consecutive pipetting cycles). Battery charge level clearly visible on display. Automatic energy saving stand-by when unused.

### Accessories

Cat. No.	Description	Qty/Pack
1370777D	Nozzle protection Filters for 10mL Model, PP Fibers	100/pk

### Charging Accessories

Cat. No.	Description	Qty/Pack
13-709-75	Pipette Charging Stand, 3 Charging Positions, Holds Pipettes or Spare Batteries	1/pk
03-410-198	Spare Battery Pack (NiMH, 4.8V)	1/pk
03-410-199	Spare Battery Duo Pack (NiMH, 4.8V)	2/pk
13-709-78	Power Supply, 100-240V	1/pk

# Acura® *electro* Pipettes

200 µl XS



# A World of Pipetting Expertise with Socorex®

**Jackie Williams**  
Global Product Manager,  
Glass & Plastic Containers,  
Liquid Handling & Consumables

"Jackie has unique experience as a Product Manager at WHEATON. She established her technical credentials with a bachelor's degree in chemistry from Ursinus College, and started her career working in a laboratory. She worked with a diversity of samples, including food, environmental and ultimately pharmaceutical products. After successfully pursuing a MBA from Rutgers University, she entered the ranks of management at a multi-national laboratory chemical supplier.

Advancing from technical services to marketing communications, Jackie soon moved on to join WHEATON where she oversaw marketing communications for the company's entire product offering. She now spends her time focused on container and liquid handling products as a product manager, applying her unique brand of product stewardship to some of the most important products in the WHEATON portfolio. Jackie brings products to market with insight gained from hands-on experience."

Share

## SOCOREX® Acura® electronic Pipettes Your Electronic Choice



Volume Range
<b>926 XS micro</b>
0.1 - 2µL
0.5 - 10µL
0.5 - 10µL
1 - 20µL
2.5 - 50µL
5 - 100µL
10 - 200µL
50 - 1000µL
<b>936 macro</b>
0.1 - 2mL
0.25 - 5mL
0.5 - 10mL
<b>956 multi</b>
0.5 - 10µL
2.5 - 50µL
10 - 200µL
20 - 350µL



For customer service, call 1-800-766-7000.  
To fax an order, use 1-800-926-1166.  
To order online: www.fishersci.com

Acura®, Socorex® are trademarks, registered in Switzerland and/or other countries, of Socorex Isba S.A.  
Copyright © 2012 WHEATON Industries Inc. Printed in USA.

FBRO\_005 05/2013