



SurePrep™ Purification Kits for Isolating RNA, DNA and Proteins
Clinical, Forensics, and Medical Research

SurePrep FFPE RNA ISOLATION KIT

APPLICATION

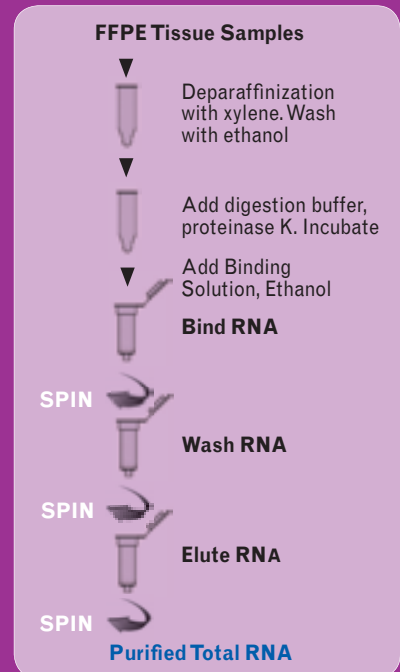
SurePrep FFPE RNA Isolation Kits rapidly isolate and purify total RNA from formaldehyde-fixed paraffin-embedded (FFPE) tissue samples. Using formalin to fix tissues results in crosslinking of RNA and protein. Moreover, the process of embedding the tissue samples can also lead to fragmentation of the RNA over time. SurePrep FFPE RNA Isolation Kits provide conditions to partially reverse the formalin modifications, maximizing the yield of functional RNA. Higher yield of RNA contributes to greater accuracy of results in downstream applications. SurePrep FFPE RNA Isolation Kits are well suited for forensic pathology and biology, histology, medical research and academic research.

KEY FEATURES AND BENEFITS

- Rapid method for the isolation and purification of all sizes of RNA, ranging from large mRNA and ribosomal RNA down to microRNA (miRNA) and small interfering RNA (siRNA) less than 200 nt*
- An easy-to-follow, streamlined protocol of five simple steps allows for efficient RNA purification without the use of phenol and chloroform
- An innovative procedure to overcome the formalin modifications resulting in high yields of functional RNA
- Spin column format for fast and easy processing of samples.
- Optional protocol for on-column DNA removal
- High yields of purified total RNA for use in downstream applications such as qRT-PCR

DOWNSTREAM APPLICATIONS

- qRT-PCR
- Primer extension
- Gene expression array assays



Procedure for BP2816-50, SurePrep FFPE RNA Isolation Kit
Four-hour procedure

SurePrep FFPE RNA ISOLATION KIT - SPECIFICATIONS

KIT SPECIFICATIONS:

Column Binding Capacity	50µg
Maximum Amount of Sample	5 paraffin slices, 20µm thick Unsectioned block: 25mg
Size of RNA Purified	Large, small and micro. Protocol does not assume fragmentation.
Lysis Method	Deparaffinization with xylene followed by enzymatic digestion
Final Elution Volume	50µL
No. of Buffers	5 buffers, 2 enzymes
Time to Complete Process	4 hours (3-hour proteinase K digestion)

No. of Preps	Cat. No.	Description
50	BP2816-50	SurePrep FFPE RNA Isolation Purification Kit

Note: Longer time is required to sufficiently isolate all functionally intact total RNA species from a preserved sample in order to maximize yield.

*The RNA fragments purified depend on the age of the FFPE tissue as the degree of fragmentation of the RNA will increase over time.

SurePrep NUCLEAR OR CYTOPLASMIC RNA PURIFICATION KIT

APPLICATION:

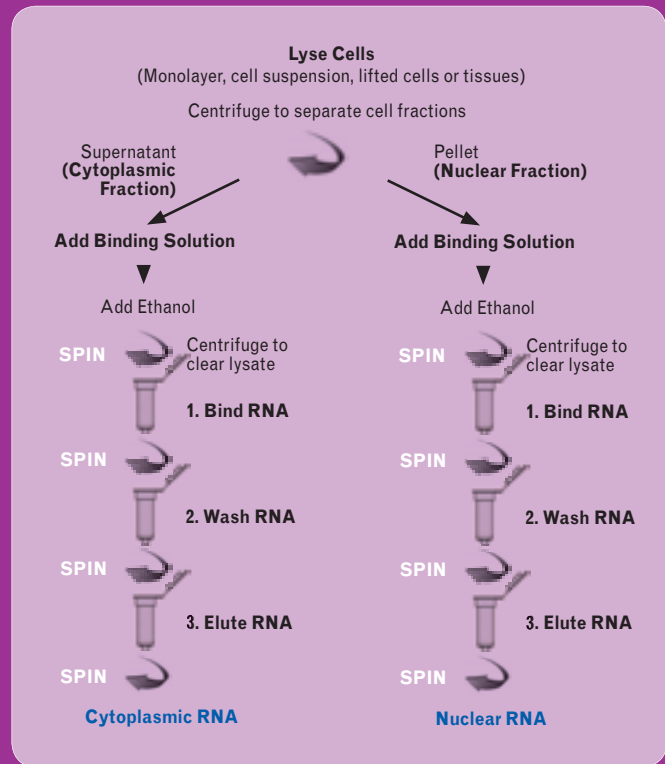
SurePrep Nuclear or Cytoplasmic RNA Purification Kits rapidly isolate and purify both nuclear and cytoplasmic RNA from cultured animal cells and small tissue samples. SurePrep kits are well suited for academic and medical research.

KEY FEATURES AND BENEFITS

- Fast and easy processing using efficient spin-column procedure
- All nuclear and cytoplasmic RNA molecules can be isolated, from large mRNA to microRNA (miRNA) and small interfering RNA (siRNA)
- Isolate fractionated RNA as opposed to total RNA
- No genomic DNA contamination in the cytoplasmic fraction
- Total RNA is isolated without the use of phenol and chloroform

DOWNSTREAM APPLICATIONS

- Real-time PCR
- Reverse transcription PCR
- Northern blotting
- RNase protection and primer extension
- Expression array analysis



SurePrep NUCLEAR OR CYTOPLASMIC RNA PURIFICATION KIT - SPECIFICATIONS

KIT SPECIFICATIONS:

Column Binding Capacity.....50µg
 Size of RNA PurifiedAll sizes, including small RNA (<200 nt)
 Maximum Column Loading Volume600µL
 Maximum Amount of Starting Material
 Animal Cells.....3 x 10⁶ cells
 Animal Tissues15mg
 Time to Complete Purification Process45 minutes for 10 purifications
 Average Yields from RNA Purification
 HeLa Cells, Cytoplasmic (1 x 10⁶ cells).....15µg
 HeLa Cells, Nuclear (1 x 10⁶ cells).....≤ 3.5µg

KIT COMPONENTS:

Lysis Solution, 20mL; RNA Wash Solution, 22mL; Binding Solution, 25mL; RNA Elution Buffer, 6mL; Spin Columns, 50; Collection Tubes, 50; 1.7mL Elution Tubes, 50; Product Insert

RECOMMENDED STORAGE:

All solutions should be kept tightly sealed and stored at room temperature.

No. of Preps	Cat. No.	Description
50	BP2805-50	SurePrep Nuclear or Cytoplasmic RNA Purification Kit

SurePrep RNA/DNA/PROTEIN PURIFICATION KIT

APPLICATION

SurePrep RNA/DNA/Protein Purification Kits rapidly isolate and purify total RNA, genomic DNA and total proteins sequentially from a single sample. Samples may consist of cultured animal cells, tissue samples, blood, bacteria, yeast, fungi or plants. These kits are useful for isolating macromolecules from difficult-to-obtain or small samples such as biopsy materials because the SurePrep process eliminates the need to fractionate the sample. SurePrep kits are well suited for academic and medical research.

KEY FEATURES AND BENEFITS

- Fast and easy processing using efficient spin-column procedure
- Total RNA, genomic DNA and proteins are all column-purified using the same column
- Sequential isolation of nucleic acids and proteins from a single lysate: no need to split the lysate
- Isolate high-quality RNA in all sizes, including large mRNA and rRNA to microRNA (miRNA)
- Analysis is more reliable since RNA, DNA and proteins are derived from the same sample
- Isolate high-quality genomic DNA with a molecular weight ≥ 30 kb
- High yields of isolated proteins
- No phenol or chloroform extractions

DOWNSTREAM APPLICATIONS

RNA

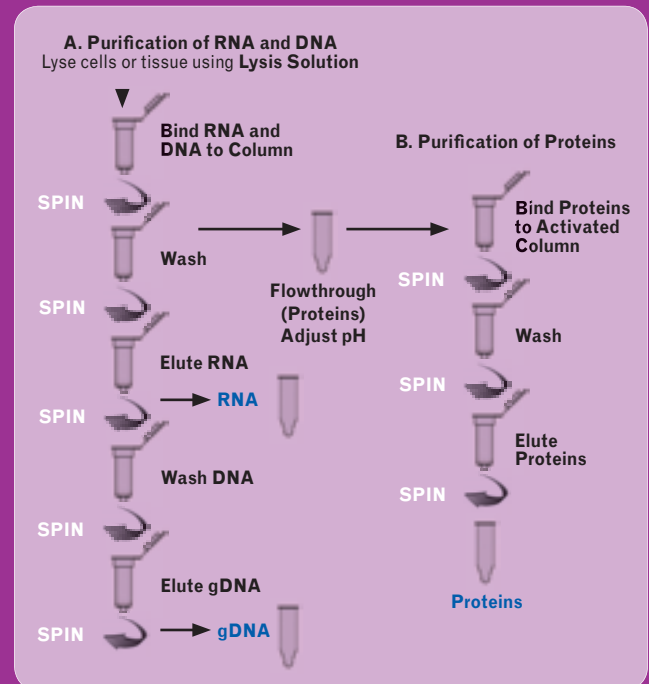
- qRT-PCR
- Northern blotting
- RNase protection
- Primer extension
- Expression array analysis

GENOMIC DNA

- PCR
- Sequencing
- Southern blotting
- SNP analysis

PROTEIN

- SDS-PAGE analysis
- Western blots
- Mass Spectrometry



Procedure for BP2802-50, SurePrep RNA/DNA/Protein Purification Kit
Thirty minutes for 10 purifications

SurePrep RNA/DNA/PROTEIN PURIFICATION KIT - SPECIFICATIONS

KIT SPECIFICATIONS:

Column Binding Capacity.....	50µg for RNA 20µg for DNA 200µg for protein
Maximum Column Loading Volume	600µL
Size of RNA Purified	All sizes, including small RNA (<200 nt)
Size of DNA Purified	≥ 30 kb
Maximum Amount of Starting Material	
Animal cells.....	3×10^6 cells
Animal tissues.....	25mg
Blood.....	100µL
Bacteria.....	1×10^9 cells
Yeast.....	1×10^8 cells
Fungi.....	50mg
Plant Tissues	50mg
Time to complete purification process.....	30 minutes for 10 purifications
Average Yields from RNA Purification	
HeLa Cells (1×10^6 cells).....	15µg RNA
HeLa Cells (1×10^6 cells).....	8µg DNA
HeLa Cells (1×10^6 cells).....	150µg protein

KIT COMPONENTS:

Lysis Solution, 40mL; RNA Wash Solution, 20mL; RNA Elution Solution, 6mL; gDNA Wash Solution, 15mL; gDNA Elution Buffer, 15mL; Protein Column Regeneration Buffer, 30mL; Protein Column Activation and Wash Buffer, 60mL; Protein pH Binding Buffer, 4mL; Protein Elution Buffer, 8mL; Protein Neutralizer, 2mL; Protein Loading Dye, 2mL; Spin Columns, 50; Collection tubes, 200; Product Insert

RECOMMENDED STORAGE:

The Protein Loading Dye should be stored at -20°C upon arrival. All other solutions should be kept tightly sealed and stored at room temperature.

No. of Preps	Cat. No.	Description
50	BP2802-50	SurePrep RNA/DNA/Protein Purification Kit

SurePrep SMALL RNA PURIFICATION KIT

APPLICATION:

SurePrep Small RNA Purification Kits are optimized for isolation and purification of small RNAs (< 200 nt) from larger RNAs in various biological samples such as animal cells and tissues, bacteria, and plants. These kits are well suited for academic and medical research.

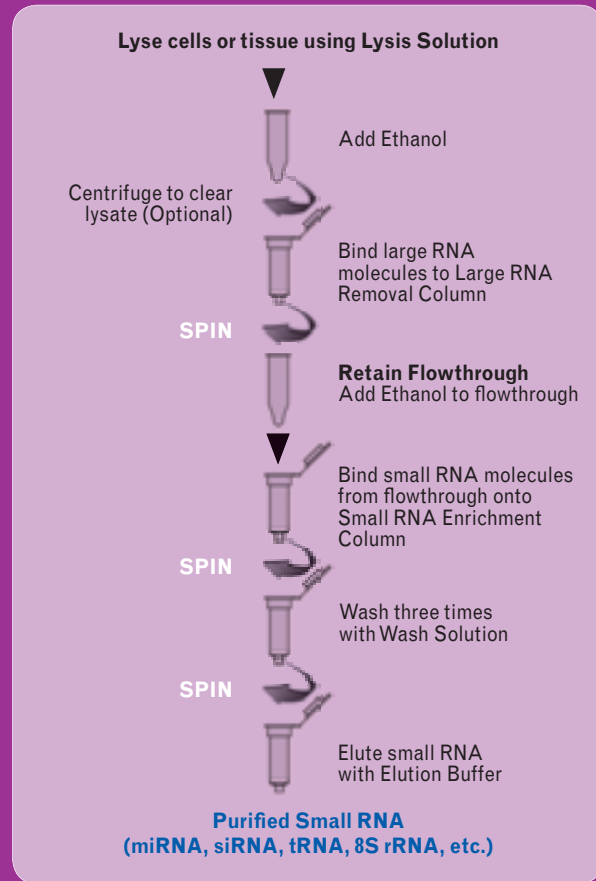
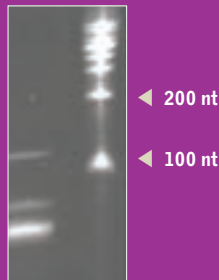
KEY FEATURES AND BENEFITS

- Isolate all small RNA molecules (<200 nucleotides)
- Minimal contamination from large RNA molecules and genomic DNA
- Fast and easy processing using rapid spin-column format
- No phenol or chloroform extractions

DOWNSTREAM APPLICATIONS

- Quantitative RT-PCR
- Northern blotting
- Microarray assays

Small RNA isolated from 5×10^6 HeLa cells using the SurePrep Small RNA Purification Kit. Purified small RNA (lane 1) and a 100 nt RNA ladder (lane 2) were run on an 8% urea-PAGE gel.



Procedure for BP2801-25, SurePrep Small RNA Purification Kit
Forty-five minutes for 10 purifications

SurePrep SMALL RNA PURIFICATION KIT - SPECIFICATIONS

KIT SPECIFICATIONS:

Column Binding Capacity.....50µg
Maximum Column Loading Volume600µL
Size of RNA Purified<200 nt

Maximum Amount of Starting Material

Animal Cells..... 3×10^6 cells
Animal Tissues25mg
Bacteria 5×10^8 cells
Plant Tissues.....50mg

Time to Complete Purification Process45 minutes for 10 purifications

KIT COMPONENTS:

Lysis Solution, 2 x 20mL; Wash Solution, 22mL; RNA Elution Buffer, 6mL; Large RNA Removal Columns, 25; Small RNA Enrichment Columns, 25; Collection Tubes, 50; 1.7mL Elution Tubes, 50; Product Insert

RECOMMENDED STORAGE:

Store at room temperature.

No. of Preps	Cat. No.	Description
25	BP2801-25	SurePrep Small RNA Purification Kit

SurePrep TrueTotal™ RNA PURIFICATION KIT

APPLICATION:

SurePrep TrueTotal RNA Purification Kits rapidly isolate and purify total RNA from a variety of biological sources including blood, animal cells and tissues, bacteria, yeast, fungi, and plants. SurePrep kits are well suited for academic and medical research.

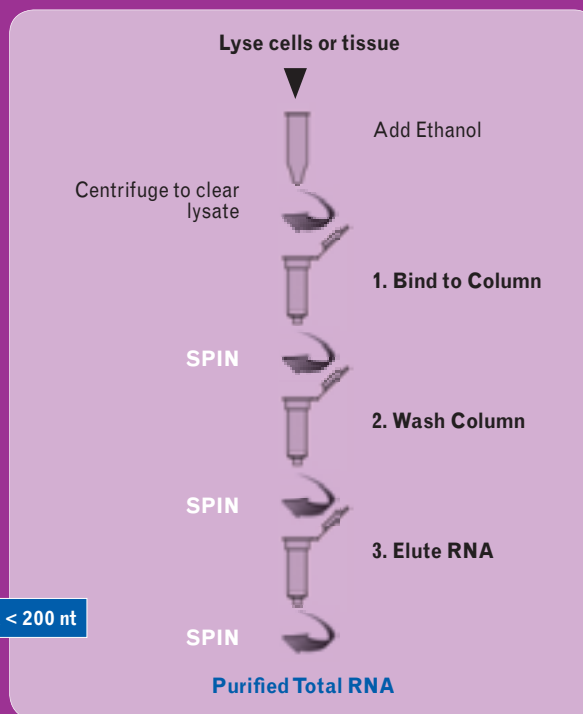
KEY FEATURES AND BENEFITS

- Fast and easy processing using rapid spin-column format
- Isolate all sizes of RNA including large RNA and small RNA species
- No phenol or chloroform extractions
- Isolate and detect RNA from as little as a single animal cell

DOWNSTREAM APPLICATIONS

- Quantitative RT-PCR
- Northern blotting
- RNase protection and primer extension
- Expression array assays

Total RNA isolated from *E. coli* in log-phase growth using the TrueTotal RNA Purification Kit. One µg of total RNA isolated from *E. coli* (strain FB5a, Fisher Cat. # BP4000-3) was loaded in lanes 2-4 on a 1.5% denaturing formaldehyde-agarose gel. Lane 1 contained a 1kb RNA standard (BP2811). Electrophoresis was performed at 100V for 70 min. and the gel stained with ethidium bromide.



Procedure for BP2800-50, SurePrep TrueTotal™ RNA Purification Kit
Twenty minutes for 10 purifications

SurePrep TrueTotal RNA PURIFICATION KIT - SPECIFICATIONS

KIT SPECIFICATIONS:

Column Binding Capacity.....50µg
Maximum Column Loading Volume600µL
Size of RNA PurifiedAll sizes, including small RNA (<200 nt)

Maximum Amount of Starting Material

Animal Cells.....3 x 10⁶ cells
Animal Tissues25mg
Blood.....100µL
Bacteria1 x 10⁹ cells
Yeast1 x 10⁸ cells
Fungi50mg
Plant Tissues.....50mg

Time to Complete Purification Process.....20 minutes for 10 purifications

Average Yields from RNA Purification

HeLa cells (1 x 10⁶ cells).....15µg
E. coli (1 x 10⁹ cells).....50µg

KIT COMPONENTS:

Lysis Solution, 40mL; RNA Wash Solution, 22mL; RNA Elution Buffer, 6mL; Micro Spin Columns, 50; Collection Tubes, 50; 1.7mL Elution Tubes, 50; Product Insert

RECOMMENDED STORAGE:

Store at room temperature.

No. of Preps	Cat. No.	Description
50	BP2800-50	SurePrep TrueTotal RNA Purification Kit

SurePrep RNA/PROTEIN PURIFICATION KIT

APPLICATION:

SurePrep RNA/Protein Purification Kits rapidly isolate and purify total RNA and proteins sequentially from a single sample of cultured animal cells, tissue samples, blood, bacteria, yeast, fungi or plants. SurePrep kits are well suited for academic and medical research.

KEY FEATURES AND BENEFITS

- Fast and easy processing using rapid spin-column format
- All columns for RNA purification and protein purification provided
- Sequentially isolate nucleic acids and proteins from a single lysate: no need to split the lysate
- Isolate all sizes of RNA, from large mRNA and rRNA down to microRNA (miRNA)
- No phenol or chloroform extractions
- Isolate high quality total RNA
- High yields of isolated proteins

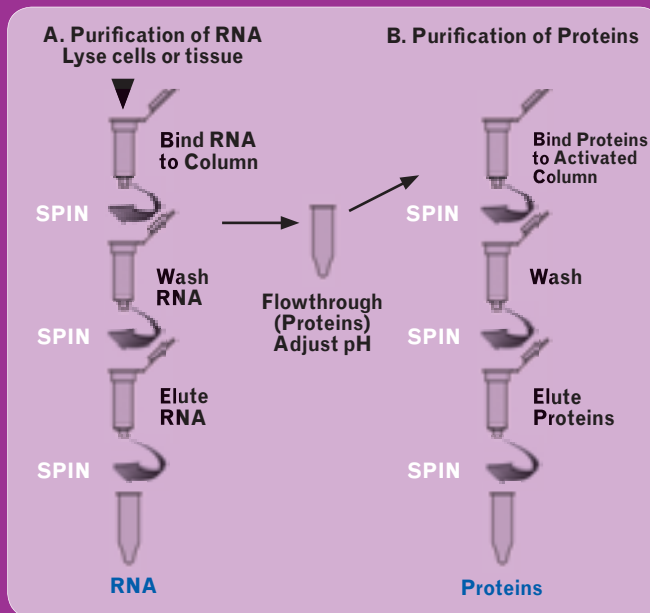
DOWNSTREAM APPLICATIONS

RNA

- Reverse transcription PCR
- Northern blotting
- RNase protection
- Primer extension
- Expression array analysis

PROTEIN

- SDS-PAGE analysis
- Western blots



Procedure for BP2806-50, SurePrep RNA/Protein Purification Kit
Thirty minutes for 10 purifications

SurePrep RNA/PROTEIN PURIFICATION KIT - SPECIFICATIONS

KIT SPECIFICATIONS:

Column Binding Capacity.....	50µg RNA 200µg for protein
Maximum Column Loading Volume	600µL
Size of RNA Purified	All sizes, including small RNA (<200 nt)
Maximum Amount of Starting Material	
Animal Cells.....	3 x 10 ⁶ cells
Animal Tissues	25mg
Blood.....	100µL
Bacteria	1 x 10 ⁹ cells
Yeast.....	1 x 10 ⁸ cells
Fungi.....	50mg
Plant Tissues.....	50mg
Time to complete purification process.....	30 minutes for 10 purifications
Average Yields from RNA Purification	
HeLa Cells (1 x 10 ⁶ cells).....	15µg RNA
HeLa Cells (1 x 10 ⁶ cells).....	150µg protein

KIT COMPONENTS:

Lysis Solution, 40mL; Nucleic Acid Wash Solution, 22mL; Nucleic Acid Elution Solution, 15mL; Protein Column Regeneration Buffer, 30mL; Protein Column Activation and Wash Buffer, 60mL; Protein pH Binding Buffer, 4mL; Protein Elution Buffer, 8mL; Enzyme Incubation Buffer, 6mL; Protein Neutralizer, 2mL; Protein Loading Dye, 2mL; Spin Columns, 50; Collection tubes, 150; Product Insert

RECOMMENDED STORAGE:

The Protein Loading Dye should be stored at -20°C upon arrival. All other solutions should be kept tightly sealed and stored at room temperature.

No. of Preps	Cat. No.	Description
50	BP2806-50	SurePrep RNA/Protein Purification Kit

SurePrep LEUKOCYTE RNA PURIFICATION KIT

APPLICATION:

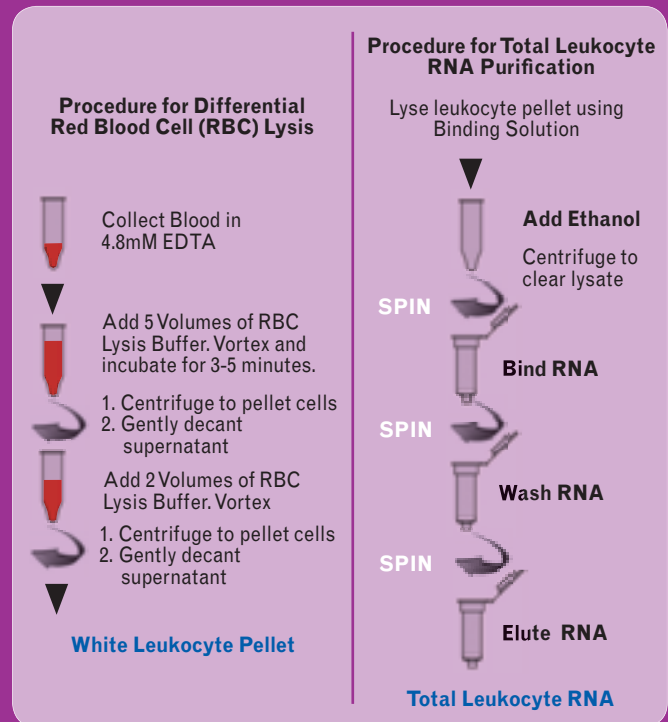
SurePrep Leukocyte RNA Purification Kits rapidly isolate and purify total leukocyte (white blood cell) RNA from mammalian blood samples. The purified RNA can be used in various expression studies including those focusing on diseases. SurePrep kits are well suited to academic and medical research.

KEY FEATURES AND BENEFITS

- Fast and easy processing using rapid spin-column format
- Differential red blood cell lysis allows for removal of a majority of globin mRNAs
- Isolate total leukocyte RNA, including all small RNA species
- No phenol or chloroform extractions
- High-quality leukocyte RNA can be used in a number of downstream applications

DOWNSTREAM APPLICATIONS

- Reverse transcription PCR
- Northern blotting
- RNase protection and primer extension
- Expression array analysis



Procedure for BP2807-50, SurePrep Leukocyte RNA Purification Kit
Forty-five minutes for 10 purifications

SurePrep LEUKOCYTE RNA PURIFICATION KIT - SPECIFICATIONS

KIT SPECIFICATIONS:

Column Binding Capacity.....	50µg
Maximum Column Loading Volume	600µL
Size of RNA Purified	All sizes, including small RNA (<200 nt)
Maximum Amount of Starting Material	
Maximum Blood Input.....	2mL or 3 x 10 ⁶ Leukocytes
Minimum Blood Input.....	10µL
Time to Complete Purification Process	45 minutes for 10 purifications
Average Yields from RNA Purification	
500µL human blood.....	1.5µg

KIT COMPONENTS:

RBC Lysis Solution, 180mL; Binding Solution, 25mL; Wash Solution, 22mL; RNA Elution Buffer, 6mL; Spin Columns, 50; Collection Tubes, 50; 1.7mL Elution Tubes, 50; Product Insert

RECOMMENDED STORAGE:

All solutions should be kept tightly sealed and stored at room temperature. The RBC Lysis Solution should be stored at 4°C upon arrival.

No. of Preps	Cat. No.	Description
50	BP2807-50	SurePrep Leukocyte RNA Purification Kit

SurePrep RNA CLEANUP AND CONCENTRATION KIT

APPLICATION:

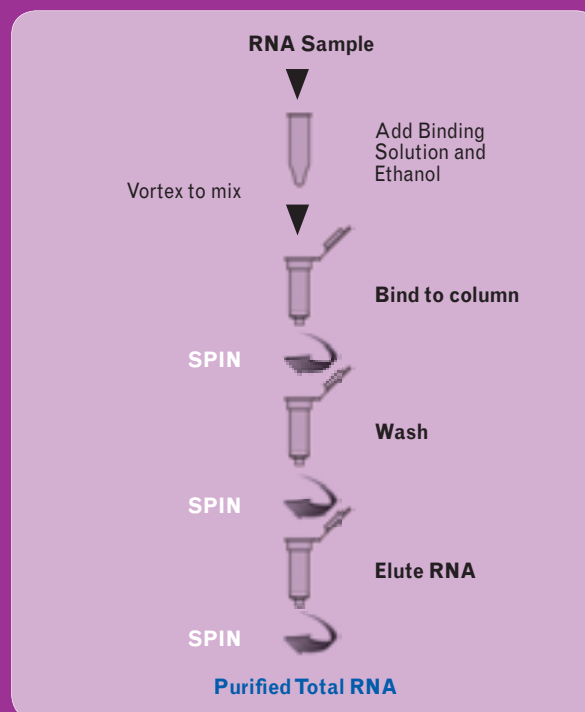
SurePrep RNA Cleanup and Concentration Kits rapidly purify and concentrate up to 50µg of RNA isolated from other methods including phenol/guanidine-based protocols, and from various upstream enzymatic reactions such as DNase treatment, labeling, and *in vitro* transcription. SurePrep kits are well suited to academic and medical research.

KEY FEATURES AND BENEFITS

- Fast and easy processing using rapid spin-column format
- Suitable for all sizes of RNA, from large mRNA to micro-RNA (miRNA)
- Able to clean up RNA isolated using different methods, including RNA from phenol/chloroform extractions

DOWNSTREAM APPLICATIONS

- qRT-PCR
- Northern blotting
- RNase protection and primer extension
- Expression array analysis



Procedure for BP2809-50, SurePrep RNA Cleanup and Concentration Kit
Twenty minutes for 10 purifications

SurePrep RNA CLEANUP AND CONCENTRATION KIT - SPECIFICATIONS

KIT SPECIFICATIONS:

Column Binding Capacity.....	50µg
Maximum Column Loading Volume.....	600µL
Size of RNA Purified.....	All sizes, including small RNA (<200 nt)
Maximum Amount of Starting Material.....	50µg of RNA
Minimum Elution Volume.....	20µL
Time to Complete Purification Process.....	20 minutes for 10 purifications
Average Recovery.....	≥ 90%

KIT COMPONENTS:

Binding Solution, 2 x 20mL; Wash Solution, 22mL; RNA Elution Buffer, 6mL; Spin Columns, 50; Collection Tubes, 50; 1.7mL Elution Tubes, 50; Product Insert

RECOMMENDED STORAGE:

All solutions should be kept tightly sealed and stored at room temperature.

No. of Preps	Cat. No.	Description
50	BP2809-50	SurePrep RNA Cleanup and Concentration Kit

SurePrep URINE EXFOLIATED CELL RNA PURIFICATION KIT

APPLICATION:

SurePrep Urine Exfoliated Cell Purification RNA Kits rapidly isolate and purify total RNA from exfoliated cells shed into the urine from the urinary tract. Purified RNA biomarkers from exfoliated cells can be used as non-invasive tools for a number of diagnostic and research applications such as monitoring bladder, kidney, or other urinary tract disorders. SurePrep kits are well suited for academic and medical research.

KEY FEATURES AND BENEFITS

- Fast and easy processing using efficient spin-column procedure
- Isolate and detect all sizes of total RNA, from large mRNA and ribosomal RNA down to microRNA (miRNA) using as little as 1mL sample of urine
- RNA can be isolated and detected from as few as 100 exfoliated cells
- Isolate high-quality total RNA from urine
- Total RNA is isolated without the use of phenol and chloroform

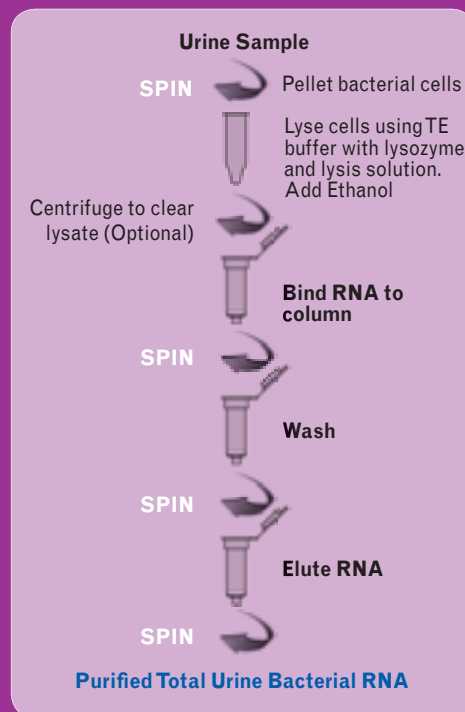
SurePrep URINE BACTERIAL RNA PURIFICATION KIT

APPLICATION:

SurePrep Urine Bacterial RNA Purification Kits isolate RNA from both Gram negative and Gram positive bacteria, including *E. coli*, *Proteus spp.*, *Klebsiella spp.*, *Enterobacter spp.*, *Serratia spp.*, *Pseudomonas spp.*, *Clostridial spp.*, and *Leptospirosis spp.*, as well as *Chlamydia trachomatis* and *Neisseria gonorrhoeae* from either human or animal urine samples. These kits preferentially purify RNA from cellular proteinaceous components, as well as glucose and salts found in urine. SurePrep kits are well suited to academic and medical research.

KEY FEATURES AND BENEFITS

- Fast and easy processing of multiple samples in 30 minutes using efficient spin-column procedure
- Isolate a diversity of high-quality total RNA, from large mRNA and ribosomal RNA down to microRNA and small interfering RNA
- Total RNA is isolated without the use of phenol and chloroform



Procedure for BP2804-50, SurePrep Urine Bacterial RNA Purification Kit
Thirty-minute procedure.

SurePrep URINE EXFOLIATED CELL and SurePrep URINE BACTERIAL RNA PURIFICATION KITS - SPECIFICATIONS

KIT SPECIFICATIONS:

Column Binding Capacity	50µg
Volume of Urine Processed	1-50mL, Exfoliated Cell Kit (BP2803-50) 10-50mL, Bacterial Kit (BP2804-50)
Maximum Input of Exfoliated Cells	1 x 10 ⁶ cells Exfoliated Cell Kit (BP2803-50)
Maximum Column Loading Volume	600µL
Size of RNA Purified	All sizes, including small RNA (<200 nt)
Time to Complete 10 Purifications	20 min. for Exfoliated Cell Kit (BP2803-50) 30 min. for Bacterial Kit (BP2804-50)
Average Yields from RNA Purification*	~1µg RNA per 1 x 10 ⁶ cells, Exfoliated Cell Kit (BP2803-50) ~0.5µg RNA per 1 x 10 ⁷ cells, Bacteria Kit (BP2804-50)

*Yield varies due to cell density of sample.

No. of Preps	Cat. No.	Description
50	BP2803-50	SurePrep Urine Exfoliated Cell RNA Purification Kit

No. of Preps	Cat. No.	Description
50	BP2804-50	SurePrep Urine Bacterial RNA Purification Kit

DOWNSTREAM APPLICATIONS

- Reverse Transcription PCR
- Northern blotting
- RNase protection and primer extension
- Expression array assays

KIT COMPONENTS:

Lysis Solution, 40mL; Wash Solution, 22mL; RNA Elution Solution, 6mL; Spin Columns, 50; Collection Tubes, 50; 1.7mL Elution Tubes, 50; Product Insert

RECOMMENDED STORAGE:

All solutions should be kept tightly sealed and stored at room temperature.

AMERICAS**Canada**

Fisher Scientific Canada
112 Colonnade Road
Ottawa, Ontario
Post Code: K2E 7L6
Toll-Free Number: 800-234-7437
Fax: 800-463-2996
www.fishersci.com

Latin America

Fisher Scientific Global Export, Latin America
3970 Johns Creek Court
Suite 500
Suwanee, GA
Post Code: 30024
Toll-Free Number: 770-871-4725
Fax: 770-871-4726
www.fishersci.com

United States

Fisher HealthCare
9999 Veterans Memorial Drive
Houston, TX
Post Code: 77038
Toll-Free Number: 800-640-0640
Fax: 800-290-0290
www.fisherhealthcare.com

Fisher Scientific
2000 Park Lane Drive
Pittsburgh, PA
Post Code: 15275
Toll-Free Number: 800-766-7000
Fax: 800-926-1166
www.fishersci.com

ASIA**China**

Fisher Scientific China
Toll-Free Number: 400 881 5117
sales.china@thermofisher.com
www.fishersci.com.cn

Shanghai Corporate Office
6/F Long Life Mansion
No. 1566 Yan An West Rd.
Shanghai, China
Post Code: 200052
Tel: (8621) 5258 1100
Fax: (8621) 5258 0119

Beijing Office
Units 702-715, 7th Floor
Tower West, Yonghe Plaza
No. 28 Andingmen East Street
Beijing, China
Post Code: 100007
Tel: (8610) 8419 3588
Fax: (8610) 8419 3580

Guangzhou Office
Room 2405-2406, JianLiBao Mansion
No. 410-412 Middle DongFeng Rd.
Guangzhou, China
Post Code: 510030
Tel: (8620) 3877 1939
Fax: (8620) 3877 1941

India

Fisher Scientific India
101A-101B, Godrej Coliseum,
Somaiya Hospital Road,
Off Eastern Express Highway,
Sion East, Mumbai 400 022
Customer Service Toll Free: 1 800 209 7001
Fax: 022 6680 3001 or 3002
qfc.customercare@thermofisher.com
www.fishersci.in

Japan

Fisher Scientific Japan
Thermo Fisher Scientific K.K.
C-2F, 3-9 Moriya-cho
Kanawaga-ku, Yokohama
221-0022 Japan
Tel: 81 45 450 6310
Fax: 81 45 450 6316
support@fishersci.co.jp
www.fishersci.co.jp

Korea

Fisher Scientific Korea
Sambu Bldg. 13F
676 Yeoksam-dong,
Kangnam-Gu
Seoul 135-979, Korea
Dir (02) 527-0300
Customer Service Center: (02) 527-0300
Fax: (02) 527-0311
sales@fishersci.co.kr
www.acros.co.kr

Malaysia

Fisher Scientific Malaysia Sdn Bhd
No. 3 Jalan Sepadu 25/123
Taman Perindustrian Axis Seksyen 25
40400 Shah Alam
Selangor Darul Ehsan Malaysia
Technical Service Hotline: 1-300-88-7868
Tel: (603) 51218888
Fax: (603) 51218899
Marketing.FSM@thermofisher.com
www.fishersci.com.my

Singapore

Fisher Scientific Singapore
Fisher Scientific Pte Ltd.
8 Pandan Crescent
LL4, #05-05 UE Tech Park
Singapore 128464
Tel: (65) 68736006
Fax: (65) 68735005
info.FSS@thermofisher.com
www.fishersci.com.sg

EUROPE**Austria**

Fisher Scientific (Austria) GmbH
Rudolf von Alt-Platz 1
A-1030 Wien
Phone: 0800 20 88 40
Fax: 0800 20 66 90
info.austria@thermofisher.com
www.at.fishersci.com

Belgium

Fisher Scientific
BP 567
B-7500 Tournai 1
Tel: 056 260 260
Fax: 056 260 270
be.fisher@thermofisher.com
www.be.fishersci.com

Czech Republic

Fisher Scientific, spol. s r.o.
Kosmonautu 324
Pardubice
CZ-530 09
Tel: 466 798 230
Fax: 466 435 008
info.cz@thermofisher.com
www.thermofisher.cz

Denmark

Fisher Scientific Biotech Line A/S
Industrivej 3
Postboks 60
DK-3550 Slangerup
Tel: +45 70 27 99 20
Fax: +45 70 27 99 29
kundeservice@thermofisher.com
www.fishersci.dk

France

Fisher Scientific
Parc d'Innovation BP 50111
67403 Illkirch Cedex
Tel: 03 88 67 53 20
Fax: 03 88 67 11 68
fr.commande@thermofisher.com
www.fr.fishersci.com

Germany

Fisher Scientific GmbH
Im Heiligen Feld 17
D-58239 Schwerte
Phone: 0800 3 47 43 70
Fax: 0800 3 47 43 71
info.germany@thermofisher.com
www.de.fishersci.com

Ireland

Fisher Scientific Ireland
Suite 3 Plaza 212
Blanchardstown Corporate
Park 2
Ballycoolin
Dublin 15
Tel: +353 01 885 5854
Fax: +353 01 899 1855
fsie.sales@thermofisher.com
www.ie.fishersci.com

Italy

Fisher Scientific
Tel: 02 953 28 258
Fax: 02 953 27 374
it.fisher@thermofisher.com
www.it.fishersci.com

The Netherlands

Fisher Scientific
Postbus 4, Scheepsbouwersweg 1B
1120 AA Landsmeer
Tel: 020 487 70 00
Fax: 020 487 70 70
nl.info@thermofisher.com
www.nl.fishersci.com

Norway

Fisher Scientific
Frysjaveien 33E
0884 Oslo
Tel: +47 22 95 59 59
Fax: +47 22 95 59 40
fisher.no@thermofisher.com
www.fishersci.no

Spain

Fisher Scientific
Via de los poblados, 17 Nave 3-13
28033 Madrid
Tel: 91 515 92 34
Fax: 91 515 92 35
es.fisher@thermofisher.com
www.es.fishersci.com

Sweden

Fisher Scientific
Box 9193
400 94 Göteborg
Tel: +46 31 - 68 94 30
Fax: +46 31 - 68 07 17
gtf.info@thermofisher.com
www.fishersci.se

Switzerland

Fisher Scientific
Wilstrasse 57 - Postfach 1006
5610 Wohlen
Tel: 056 618 41 11
Fax: 056 618 41 41
info.ch@thermofisher.com
www.ch.fishersci.com

United Kingdom

Fisher Scientific UK Ltd
Bishop Meadow Road
Loughborough
Leicestershire LE11 5RG
Tel: +44 (0)1509 231166
Fax: +44 (0)1509 231893
info@fisher.co.uk
www.fisher.co.uk

Rest of World

Thermo Fisher Scientific
Geel West Zone 2
Janssen Pharmaceuticaal 3a
2240 Geel - Belgium
Tel: +32 14 57 52 11
Fax: +32 14 59 26 10
www.acros.com

MIDDLE EAST AND AFRICA**Fisher Scientific Global Export,**

Latin America
3970 Johns Creek Court
Suite 500
Suwanee, GA
Post Code: 30024
Toll-Free Number: 770-871-4725
Fax: 770-871-4726
www.fishersci.com

©2009 Thermo Fisher Scientific Inc.
All rights reserved. Litho in U.S.A.
09_2059 DC/LJ 10M-IW-5/09
BN0403094